

# Bowflag® Basic XS angled, 50 x 150 cm

Printed by

pixis:be

Digital Printing & Displays  
by [www.pixis.be](http://www.pixis.be)

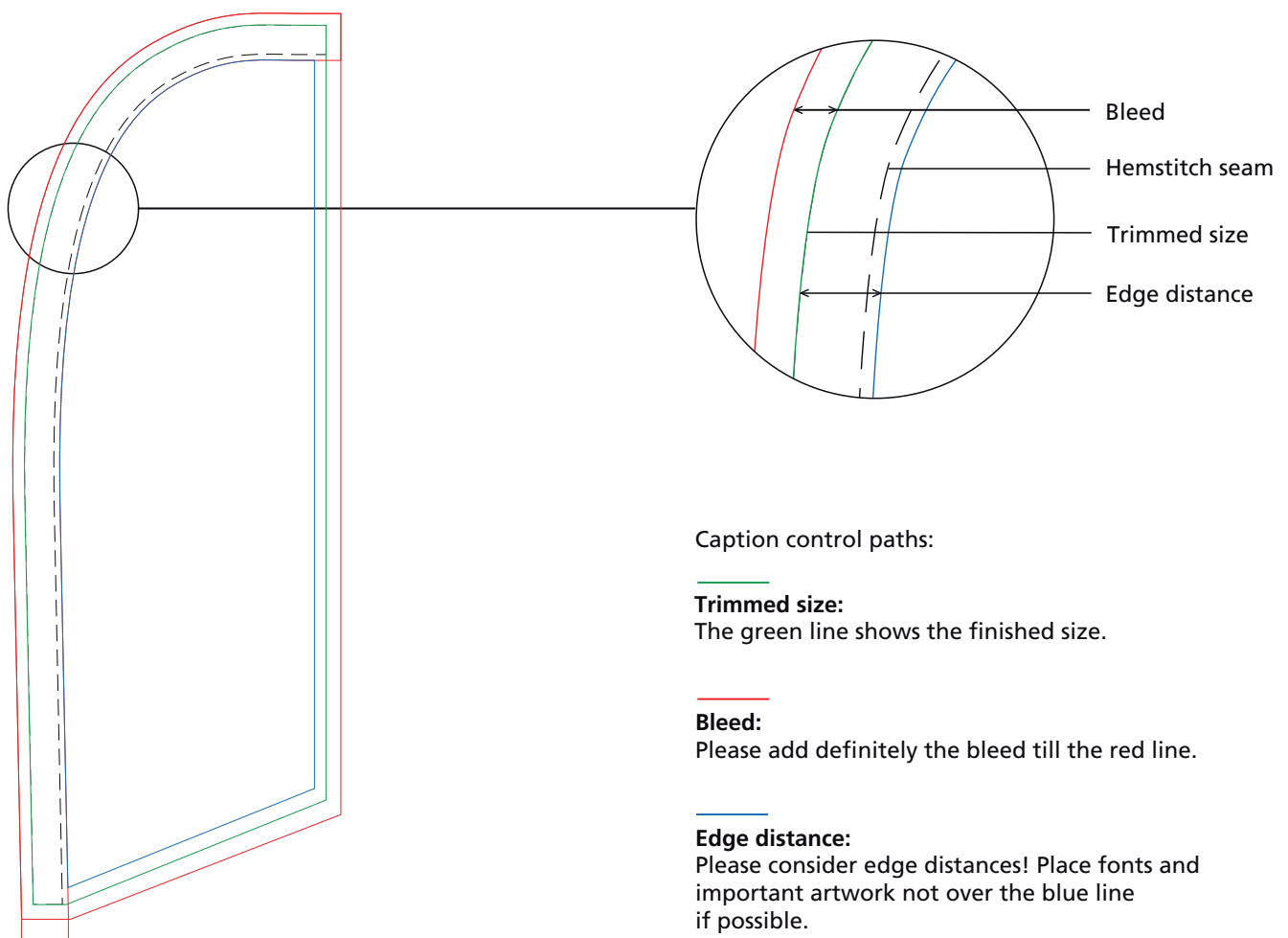
Trimmed size: 50 x 150 cm

Data format: 54,6 x 156 mm  
(Trimmed size + Bleed)

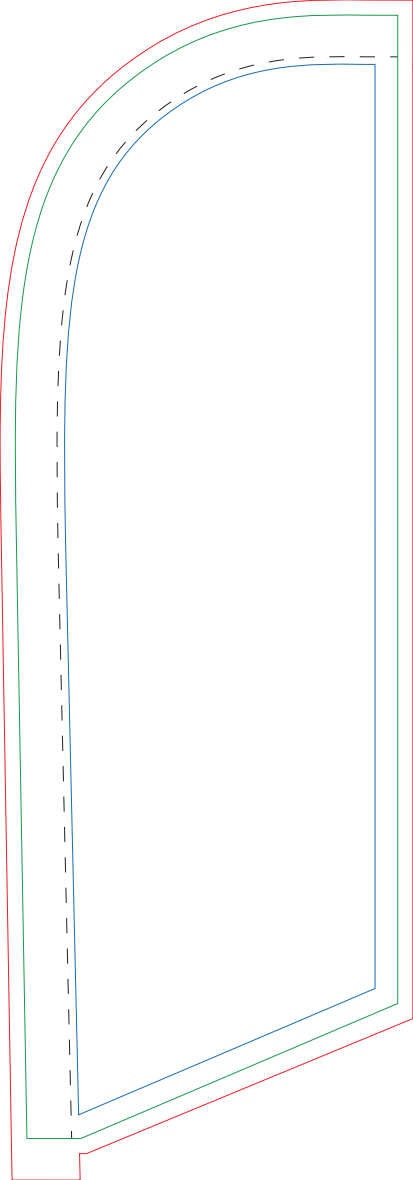
## Please note:

- use 1:10 artwork on page 2 to design
- do not change the size of the document
- Resolution: min. 600 dpi at scale 1:10
- minimum stroke: 1 mm / 2 mm (invers)
- convert fonts into curves
- delete the control paths of the artwork

Further information can be found in our information on artwork.



Drawing is not true to scale.



# Bowflag® Basic XS concave, 50 x 150 cm



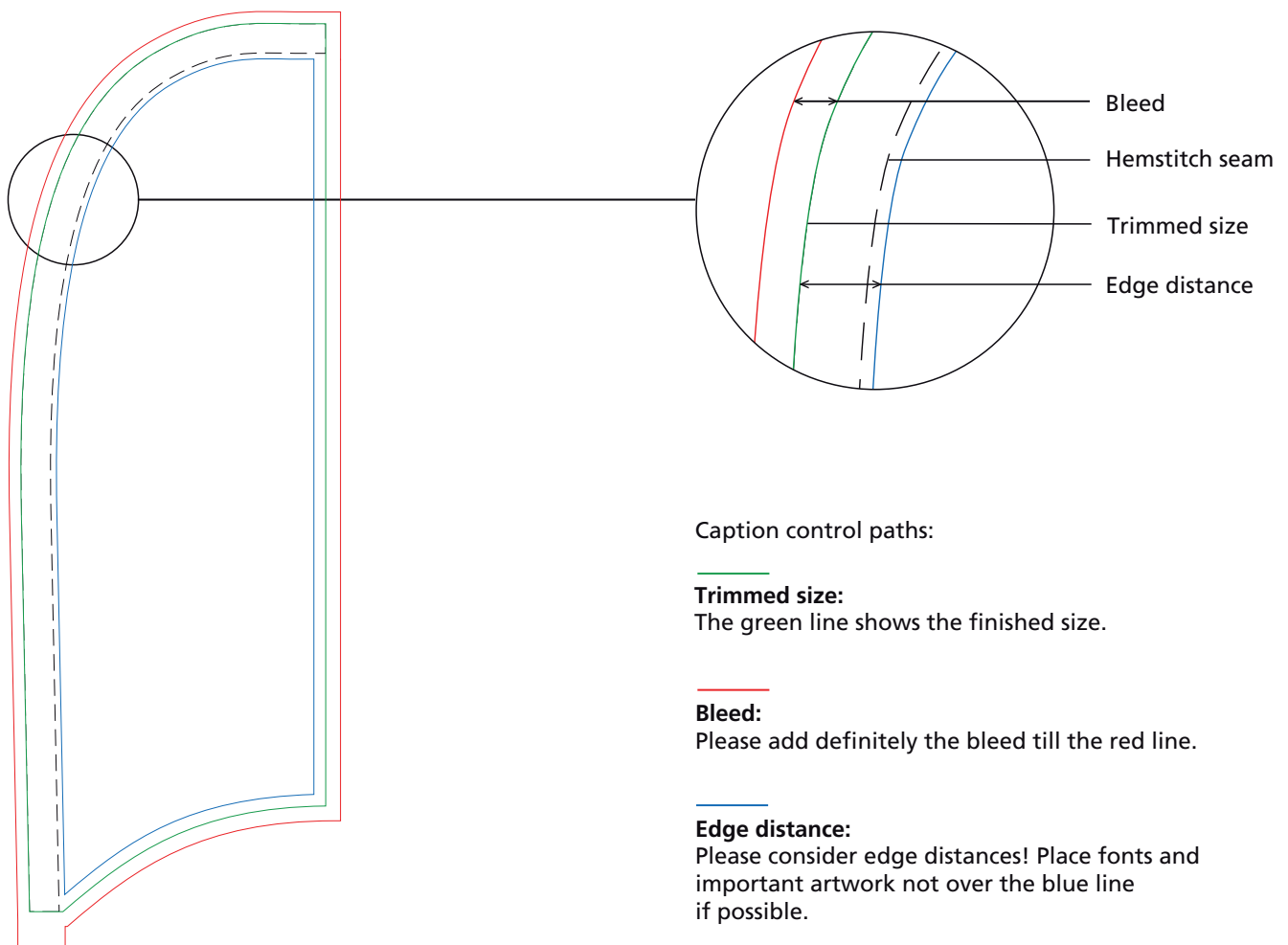
Trimmed size: 50 x 150 cm

Data format: 54,6 x 156 mm  
(Trimmed size + Bleed)

## Please note:

- use 1:10 artwork on page 2 to design
- do not change the size of the document
- Resolution: min. 600 dpi at scale 1:10
- minimum stroke: 1 mm / 2 mm (invers)
- convert fonts into curves
- delete the control paths of the artwork

Further information can be found in our information on artwork.



Drawing is not true to scale.

Caption control paths:

**Trimmed size:**

The green line shows the finished size.

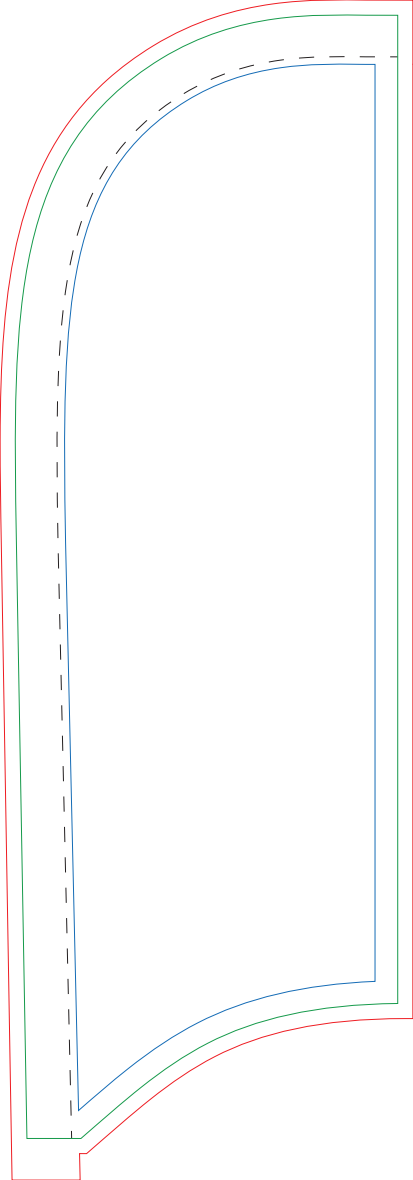
**Bleed:**

Please add definitely the bleed till the red line.

**Edge distance:**

Please consider edge distances! Place fonts and important artwork not over the blue line if possible.

-----  
**Hemstitch seam**



# Bowflag® Basic XS convexe, 50 x 150 cm



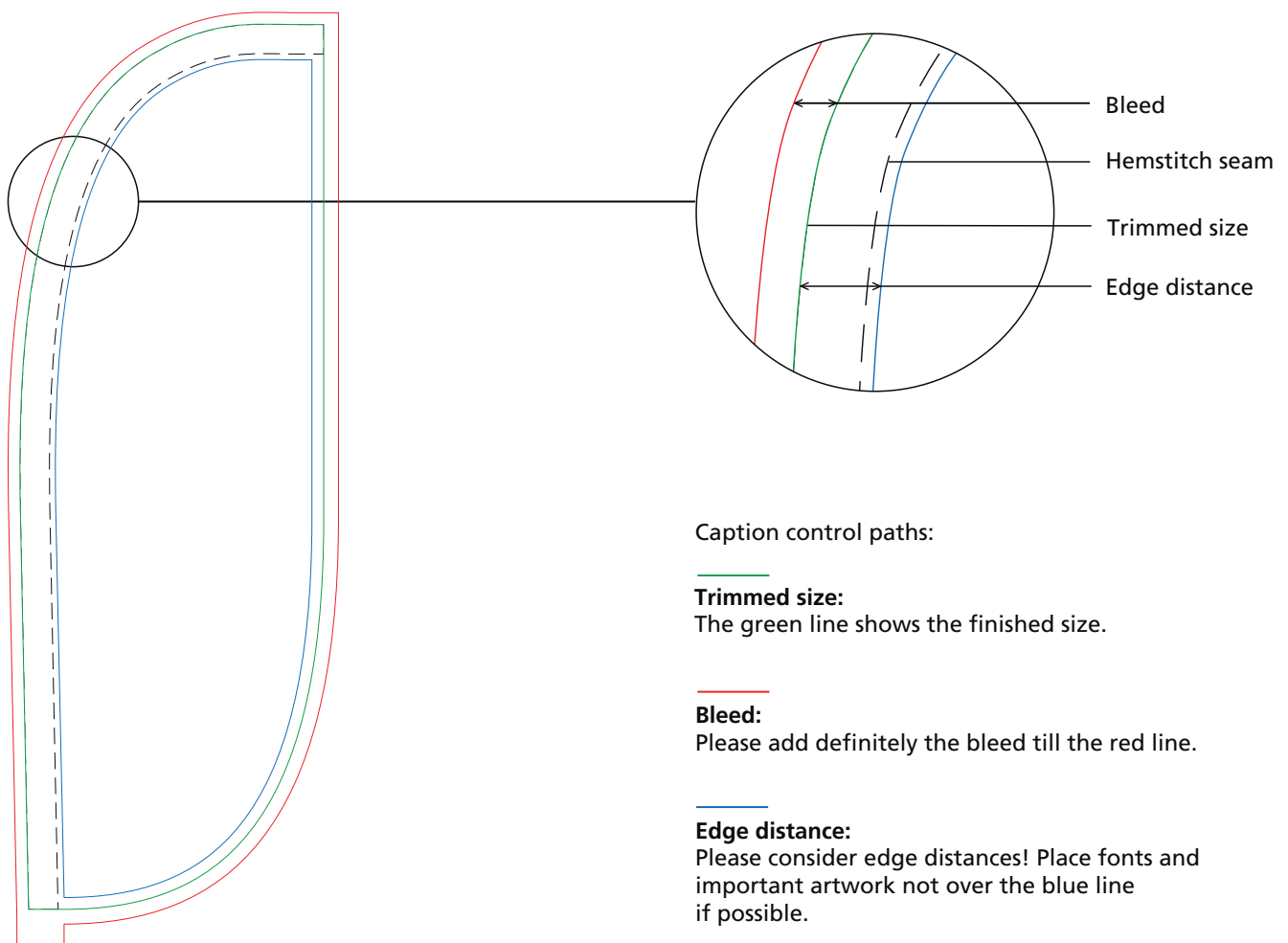
Trimmed size: 50 x 150 cm

Data format: 54,6 x 156 mm  
(Trimmed size + Bleed)

## Please note:

- use 1:10 artwork on page 2 to design
- do not change the size of the document
- Resolution: min. 600 dpi at scale 1:10
- minimum stroke: 1 mm / 2 mm (invers)
- convert fonts into curves
- delete the control paths of the artwork

Further information can be found in our information on artwork.



Caption control paths:

**Trimmed size:**

The green line shows the finished size.

**Bleed:**

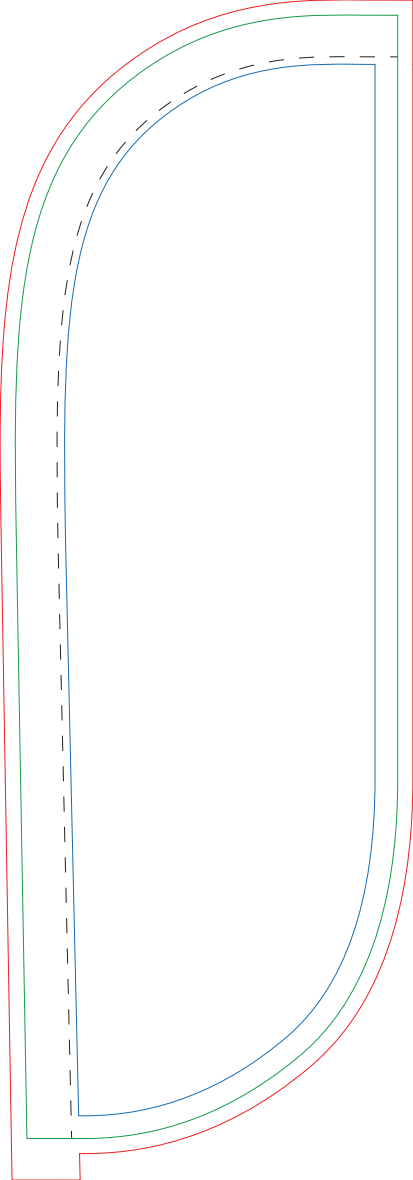
Please add definitely the bleed till the red line.

**Edge distance:**

Please consider edge distances! Place fonts and important artwork not over the blue line if possible.

-----  
**Hemstitch seam**

Drawing is not true to scale.



# Bowflag® Basic XS straight, 50 x 150 cm

Printed by

pixis:be

Digital Printing & Displays  
by [www.pixis.be](http://www.pixis.be)

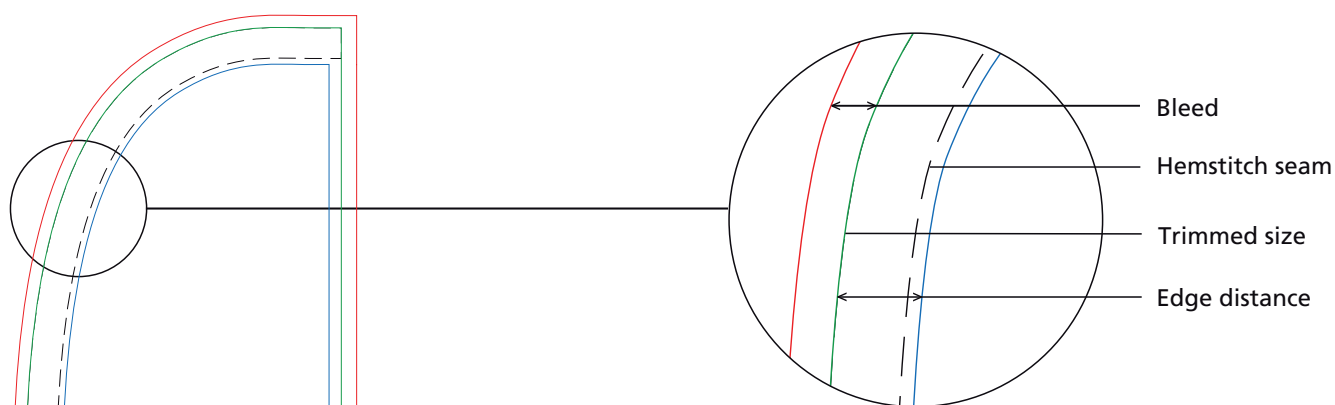
Trimmed size: 50 x 150 cm

Data format: 54,6 x 156 mm  
(Trimmed size + Bleed)

## Please note:

- use 1:10 artwork on page 2 to design
- do not change the size of the document
- Resolution: min. 600 dpi at scale 1:10
- minimum stroke: 1 mm / 2 mm (invers)
- convert fonts into curves
- delete the control paths of the artwork

Further information can be found in our information on artwork.



Caption control paths:

### Trimmed size:

The green line shows the finished size.

### Bleed:

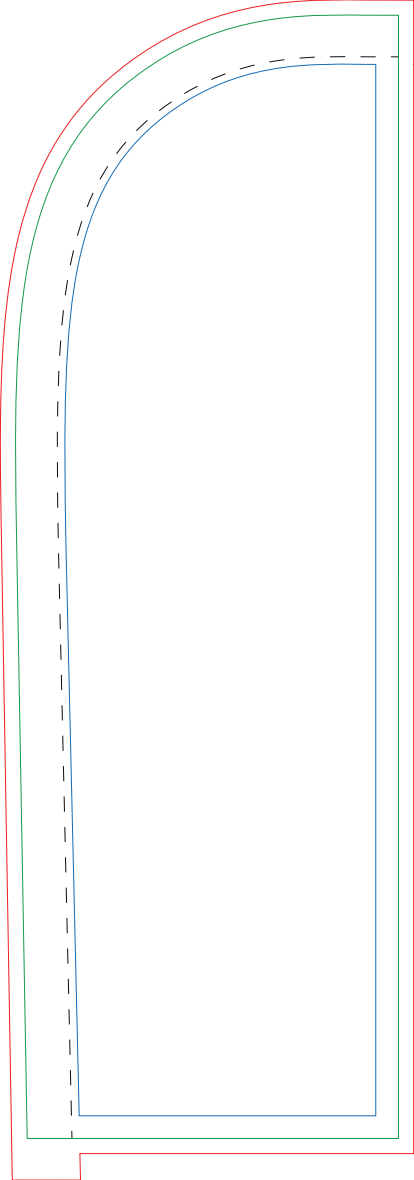
Please add definitely the bleed till the red line.

### Edge distance:

Please consider edge distances! Place fonts and important artwork not over the blue line if possible.

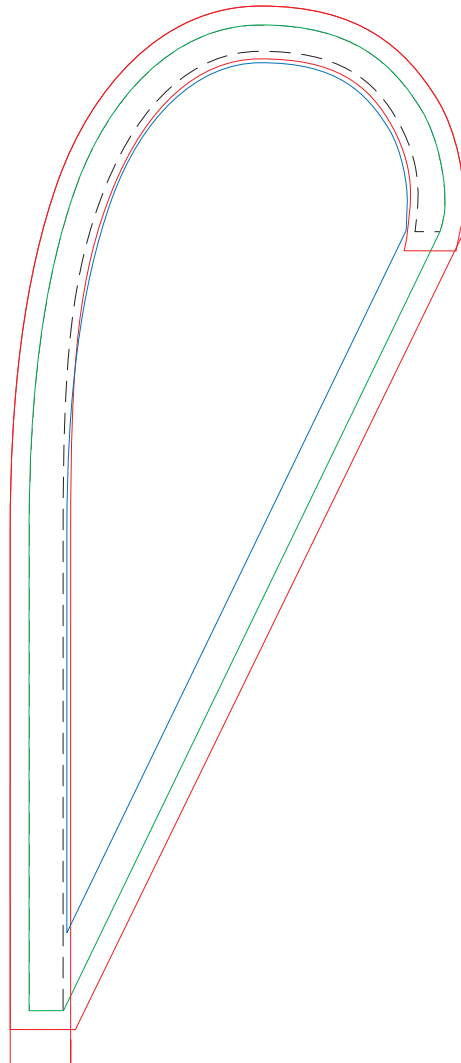
-----  
**Hemstitch seam**

Drawing is not true to scale.





Maßstab / scale: 1:10



*Zugaben:*

Ausreichend Zugaben bis zur roten Linie anlegen.

*Endformat:*

Dies ist die endgültig sichtbare Größe.

*Gestaltungsbereich:*

Schriften und wichtige Gestaltungselement möglichst nur innerhalb dieses Bereiches platzieren.

*Bleed line:*

In case of solid or full colour background please allow enough bleed.

The background colour has to end at the red line.

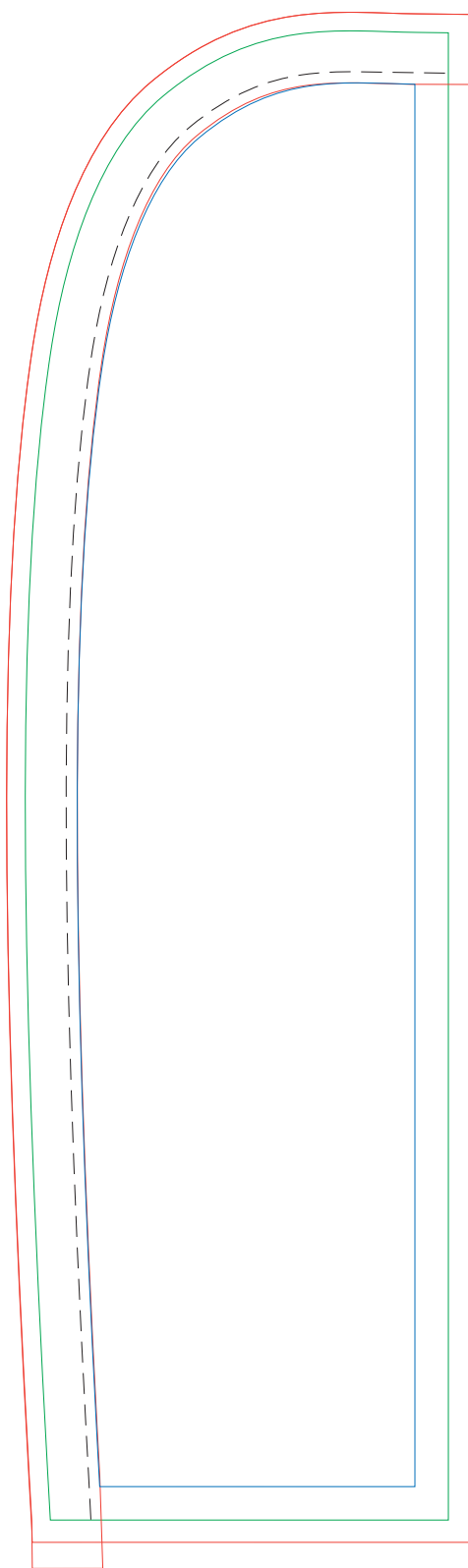
*End format:*

The green line shows the finished size.

*Artwork area:*

In order to avoid seams going through logos or logos being chopped off, please place any design within the blue line.

-----  
*Hohlsaum / hemstitch*



# Bowflag<sup>®</sup> Small gerade / straight 55 x 200 cm

Printed by

**pixis:be**

Digital Printing & Displays  
by [www.pixis.be](http://www.pixis.be)

Maßstab / scale: 1:10

---

*Zugaben:*

Ausreichend Zugaben bis zur roten Linie anlegen.

---

*Endformat:*

Dies ist die endgültig sichtbare Größe.

---

*Gestaltungsbereich:*

Schriften und wichtige Gestaltungselemente möglichst nur innerhalb dieses Bereiches platzieren.

---

*Bleed line:*

In case of solid or full colour background please allow enough bleed.

The background colour has to end at the red line.

---

*End format:*

The green line shows the finished size.

---

*Artwork area:*

In order to avoid seams going through logos or logos being chopped off, please place any design within the blue line.

-----

*Hohlsaum / hemstitch*

# Bowflag® Small konkav / concave 55 x 200 cm



Maßstab / scale: 1:10

*Zugaben:*  
Ausreichend Zugaben bis zur roten Linie anlegen.

*Endformat:*  
Dies ist die endgültig sichtbare Größe.

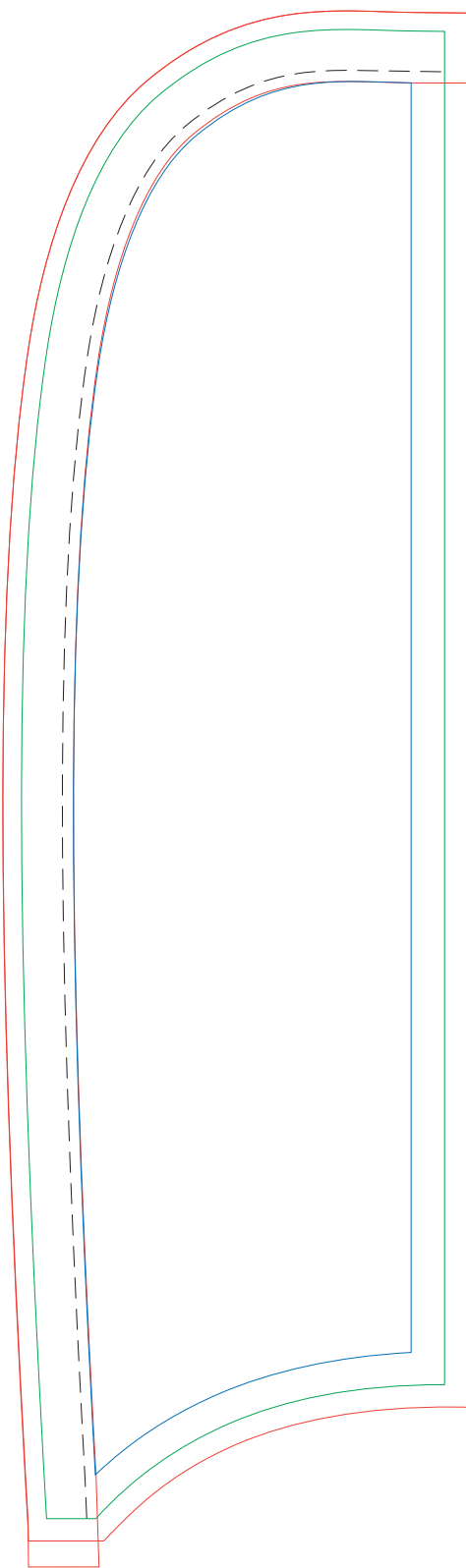
*Gestaltungsbereich:*  
Schriften und wichtige Gestaltungselemente möglichst nur innerhalb dieses Bereiches platzieren.

*Bleed line:*  
In case of solid or full colour background please allow enough bleed.  
The background colour has to end at the red line.

*End format:*  
The green line shows the finished size.

*Artwork area:*  
In order to avoid seams going through logos or logos being chopped off, please place any design within the blue line.

-----  
*Hohlsaum / hemstitch*



# Bowflag®\_Small konvex / convexe 55 x 200 cm



Maßstab / scale: 1:10

---

*Zugaben:*

Ausreichend Zugaben bis zur roten Linie anlegen.

---

*Endformat:*

Dies ist die endgültig sichtbare Größe.

---

*Gestaltungsbereich:*

Schriften und wichtige Gestaltungselemente möglichst nur innerhalb dieses Bereiches platzieren.

---

*Bleed line:*

In case of solid or full colour background please allow enough bleed. The background colour has to end at the red line.

---

*End format:*

The green line shows the finished size.

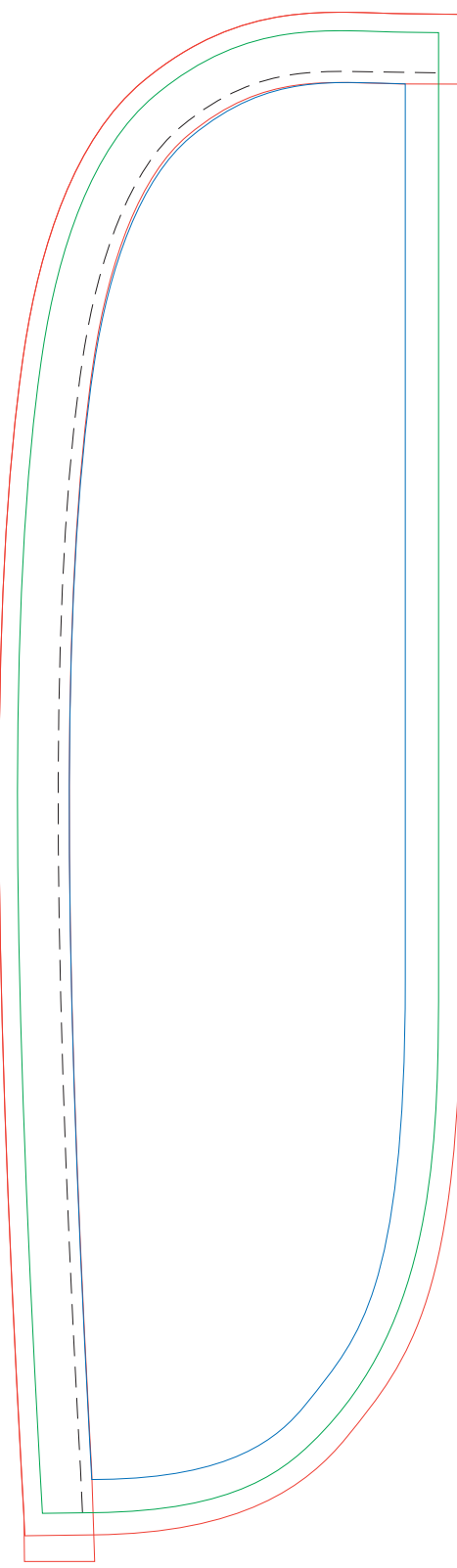
---

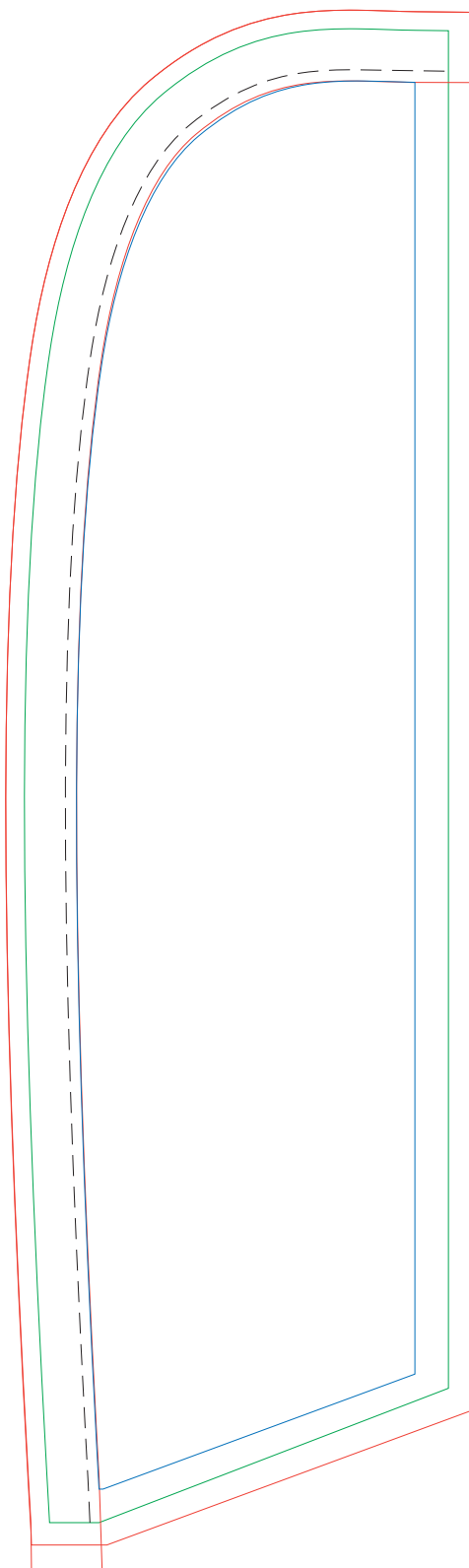
*Artwork area:*

In order to avoid seams going through logos or logos being chopped off, please place any design within the blue line.

-----

*Hohlsaum / hemstitch*





# Bowflag®\_Small schräg / angled 55 x 200 cm



Maßstab / scale: 1:10

---

*Zugaben:*

Ausreichend Zugaben bis zur roten Linie anlegen.

---

*Endformat:*

Dies ist die endgültig sichtbare Größe.

---

*Gestaltungsbereich:*

Schriften und wichtige Gestaltungselemente möglichst nur innerhalb dieses Bereiches platzieren.

---

*Bleed line:*

In case of solid or full colour background please allow enough bleed.  
The background colour has to end at the red line.

---

*End format:*

The green line shows the finished size.

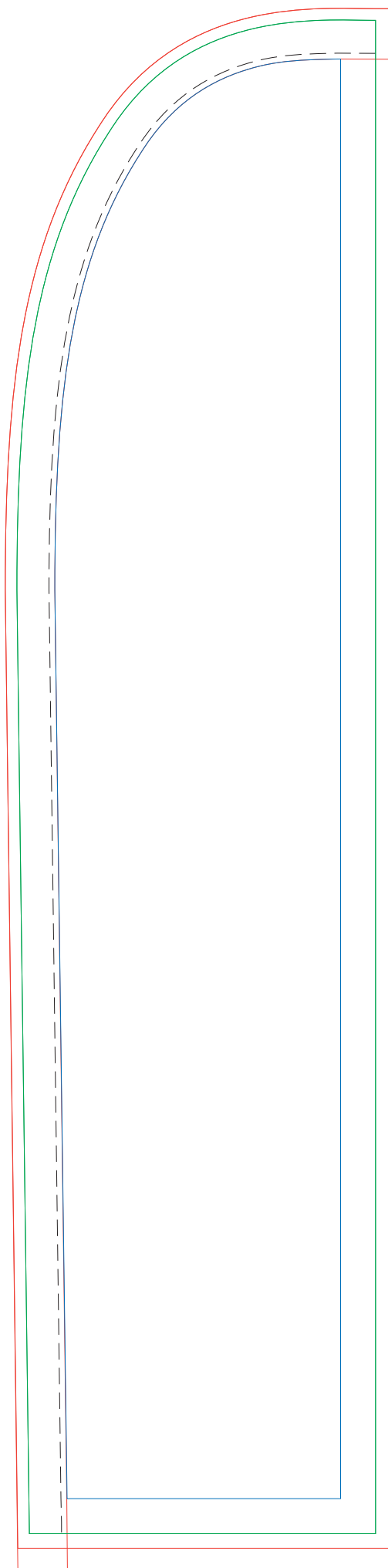
---

*Artwork area:*

In order to avoid seams going through logos or logos being chopped off, please place any design within the blue line.

-----

*Hohlsaum / hemstitch*



**Bowflag® Medium**  
gerade / straight  
60 x 260 cm



Maßstab / scale: 1:10

---

*Zugaben:*

Ausreichend Zugaben bis zur roten Linie anlegen.

---

*Endformat:*

Dies ist die endgültig sichtbare Größe.

---

*Gestaltungsbereich:*

Schriften und wichtige Gestaltungselemente möglichst nur innerhalb dieses Bereiches platzieren.

---

*Bleed line:*

In case of solid or full colour background please allow enough bleed.

The background colour has to end at the red line.

---

*End format:*

The green line shows the finished size.

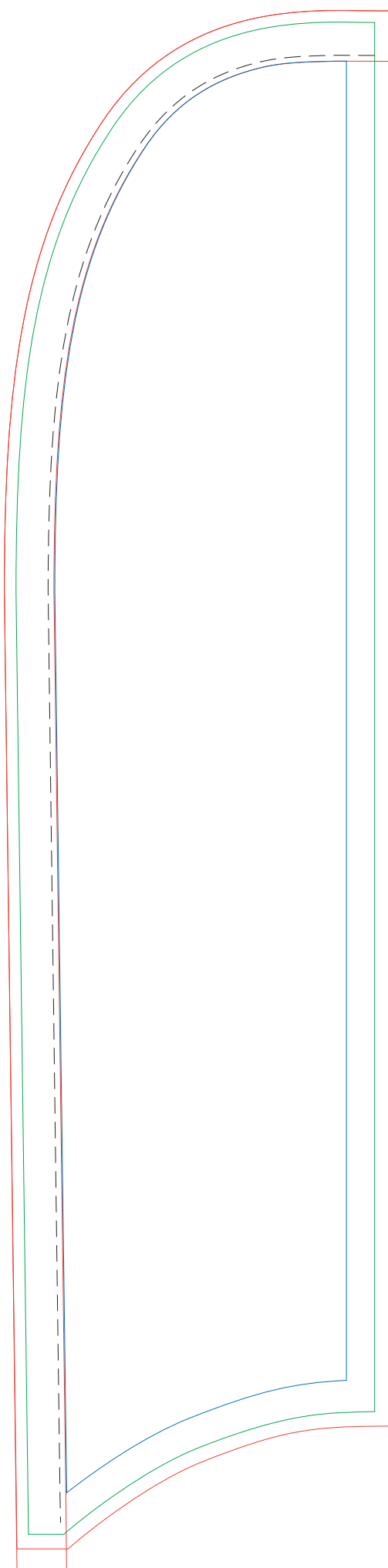
---

*Artwork area:*

In order to avoid seams going through logos or logos being chopped off, please place any design within the blue line.

-----

*Hohlsaum / hemstitch*



## Bowflag® Medium konkav / concave 60 x 260 cm



Maßstab / scale: 1:10

---

*Zugaben:*

Ausreichend Zugaben bis zur roten Linie anlegen.

---

*Endformat:*

Dies ist die endgültig sichtbare Größe.

---

*Gestaltungsbereich:*

Schriften und wichtige Gestaltungselement möglichst nur innerhalb dieses Bereiches platzieren.

---

*Bleed line:*

In case of solid or full colour background please allow enough bleed.

The background colour has to end at the red line.

---

*End format:*

The green line shows the finished size.

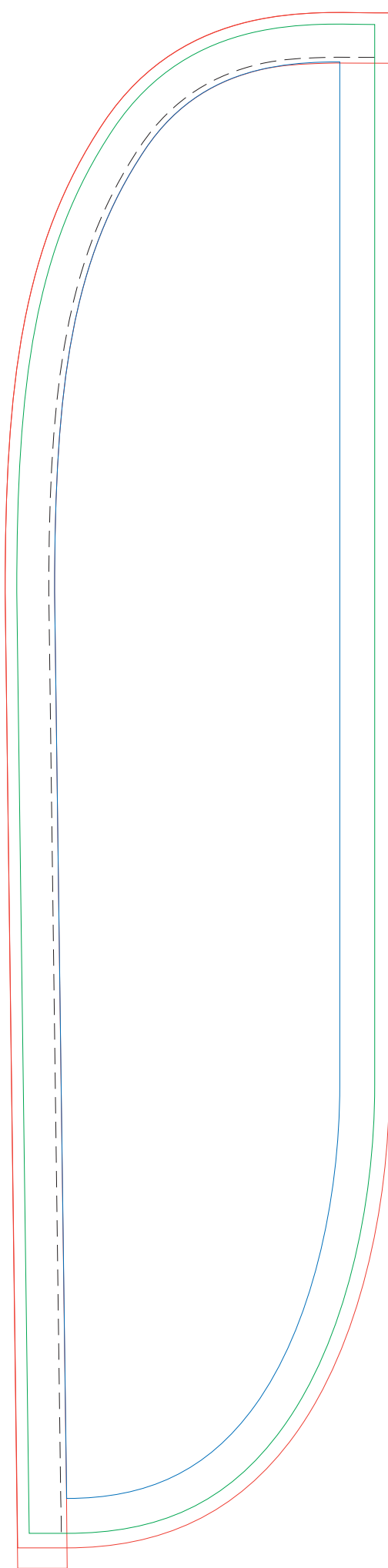
---

*Artwork area:*

In order to avoid seams going through logos or logos being chopped off, please place any design within the blue line.

-----

*Hohlsaum / hemstitch*



## Bowflag® Medium konvex / convexe 60 x 260 cm

Printed by

**pixis:be**

Digital Printing & Displays  
by [www.pixis.be](http://www.pixis.be)

Maßstab / scale: 1:10

---

*Zugaben:*

Ausreichend Zugaben bis zur roten Linie anlegen.

---

*Endformat:*

Dies ist die endgültig sichtbare Größe.

---

*Gestaltungsbereich:*

Schriften und wichtige Gestaltungselemente möglichst nur innerhalb dieses Bereiches platzieren.

---

*Bleed line:*

In case of solid or full colour background please allow enough bleed.

The background colour has to end at the red line.

---

*End format:*

The green line shows the finished size.

---

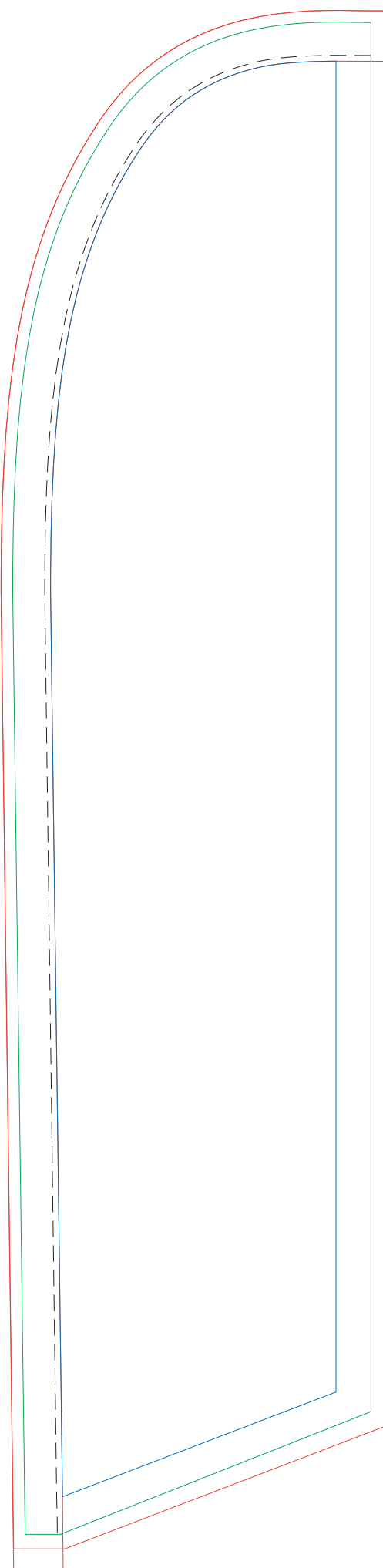
*Artwork area:*

In order to avoid seams going through logos or logos being chopped off, please place any design within the blue line.

-----

*Hohlsaum / hemstitch*





**Bowflag® Medium**  
schräg / angled  
60 x 260 cm

Printed by

**pixis:be**

Digital Printing & Displays  
by [www.pixis.be](http://www.pixis.be)

Maßstab / scale: 1:10

---

*Zugaben:*

Ausreichend Zugaben bis zur roten Linie anlegen.

---

*Endformat:*

Dies ist die endgültig sichtbare Größe.

---

*Gestaltungsbereich:*

Schriften und wichtige Gestaltungselemente möglichst nur innerhalb dieses Bereiches platzieren.

---

*Bleed line:*

In case of solid or full colour background please allow enough bleed.

The background colour has to end at the red line.

---

*End format:*

The green line shows the finished size.

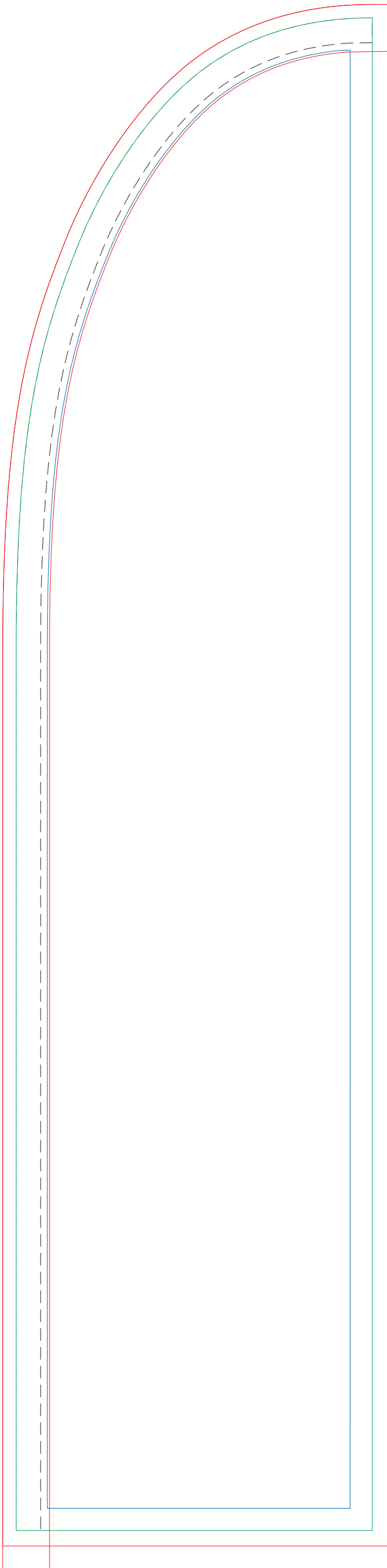
---

*Artwork area:*

In order to avoid seams going through logos or logos being chopped off, please place any design within the blue line.

-----

*Hohlsaum / hemstitch*



**Bowflag® Large**  
gerade / straight  
80 x 340 cm



Maßstab / scale: 1:10

**Zugaben:**  
Ausreichend Zugaben bis zur roten Linie anlegen.

**Endformat:**  
Dies ist die endgültig sichtbare Größe.

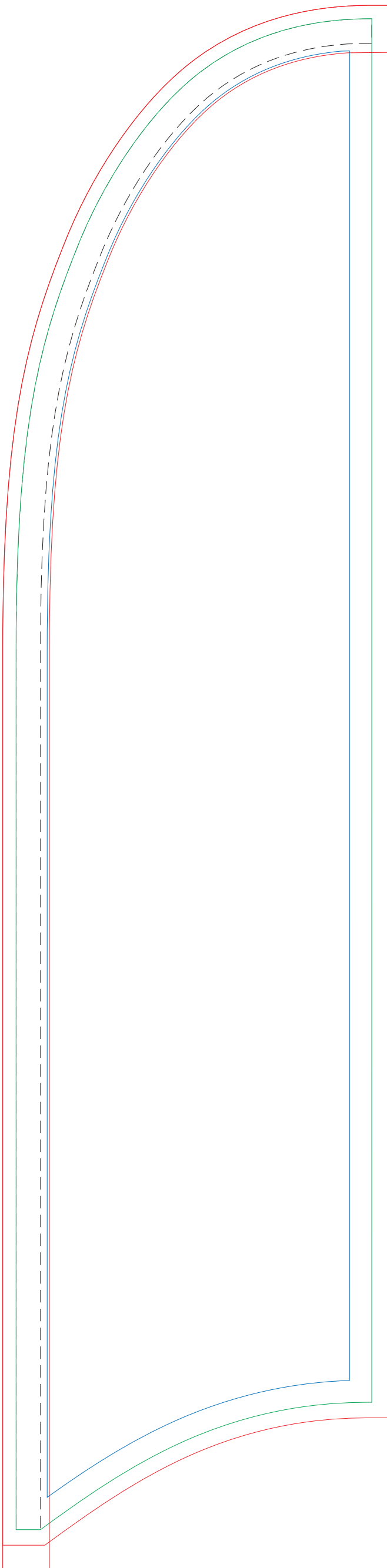
**Gestaltungsbereich:**  
Schriften und wichtige Gestaltungselemente möglichst nur innerhalb dieses Bereiches platzieren.

**Bleed line:**  
In case of solid or full colour background please allow enough bleed.  
The background colour has to end at the red line.

**End format:**  
The green line shows the finished size.

**Artwork area:**  
In order to avoid seams going through logos or logos being chopped off, please place any design within the blue line.

-----  
**Hohlsaum / hemstitch**



**Bowflag® Large**  
konkav / concave  
80 x 340 cm



Maßstab / scale: 1:10

**Zugaben:**  
Ausreichend Zugaben bis zur roten Linie anlegen.

**Endformat:**  
Dies ist die endgültig sichtbare Größe.

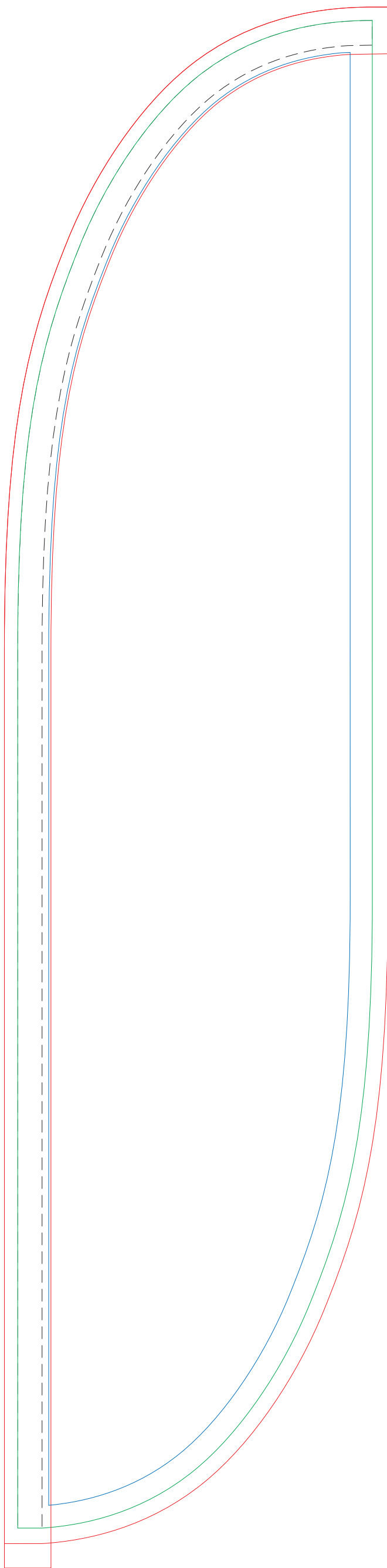
**Gestaltungsbereich:**  
Schriften und wichtige Gestaltungselemente möglichst nur innerhalb dieses Bereiches platzieren.

**Bleed line:**  
In case of solid or full colour background please allow enough bleed.  
The background colour has to end at the red line.

**End format:**  
The green line shows the finished size.

**Artwork area:**  
In order to avoid seams going through logos or logos being chopped off, please place any design within the blue line.

-----  
**Hohlsaum / hemstitch**



**Bowflag<sup>®</sup> Large**  
**konvex / convexe**  
**80 x 340 cm**



Maßstab / scale: 1:10

**Zugaben:**  
Ausreichend Zugaben bis zur roten Linie anlegen.

**Endformat:**  
Dies ist die endgültig sichtbare Größe.

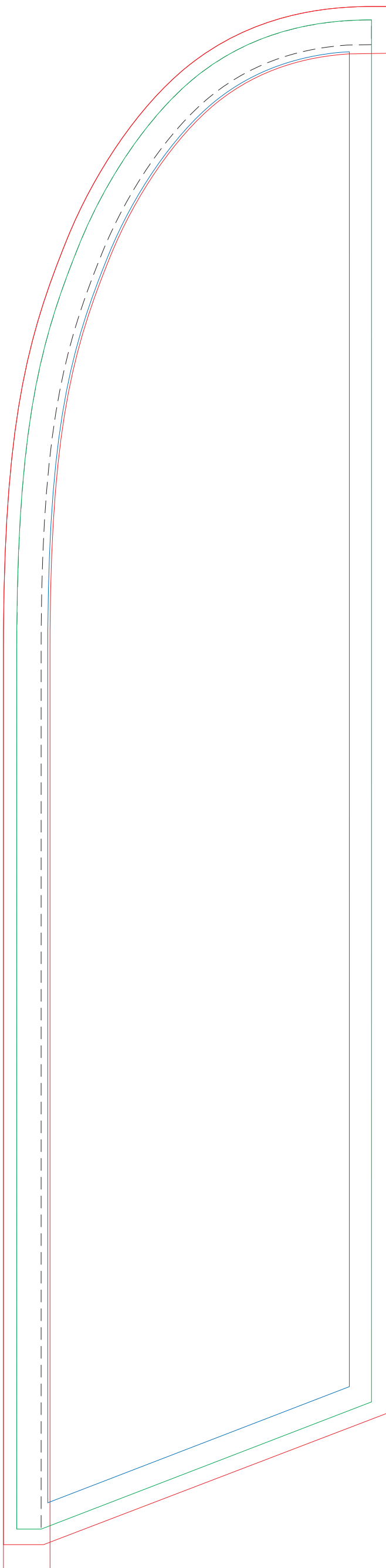
**Gestaltungsbereich:**  
Schriften und wichtige Gestaltungselement möglichst nur innerhalb dieses Bereiches platzieren.

**Bleed line:**  
In case of solid or full colour background please allow enough bleed.  
The background colour has to end at the red line.

**End format:**  
The green line shows the finished size.

**Artwork area:**  
In order to avoid seams going through logos or logos being chopped off, please place any design within the blue line.

-----  
**Hohlsaum / hemstitch**



**Bowflag<sup>®</sup>\_Large**  
**schräg / angled**  
**80 x 340 cm**



Maßstab / scale: 1:10

**Zugaben:**  
Ausreichend Zugaben bis zur roten Linie anlegen.

**Endformat:**  
Dies ist die endgültig sichtbare Größe.

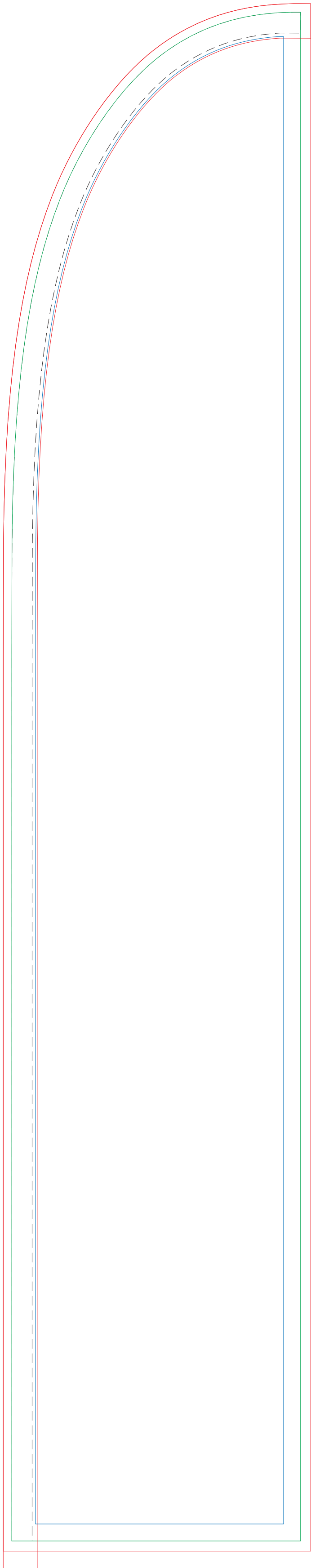
**Gestaltungsbereich:**  
Schriften und wichtige Gestaltungselemente möglichst nur innerhalb dieses Bereichs platzieren.

**Bleed line:**  
In case of solid or full colour background please allow enough bleed.  
The background colour has to end at the red line.

**End format:**  
The green line shows the finished size.

**Artwork area:**  
In order to avoid seams going through logos or logos being chopped off, please place any design within the blue line.

-----  
**Hohlsaum / hemstitch**



**Bowflag® XLarge**  
gerade / straight  
85 x 450 cm



Maßstab / scale: 1:10

**Zugaben:**  
Ausreichend Zugaben bis zur roten Linie anlegen.

**Endformat:**  
Dies ist die endgültig sichtbare Größe.

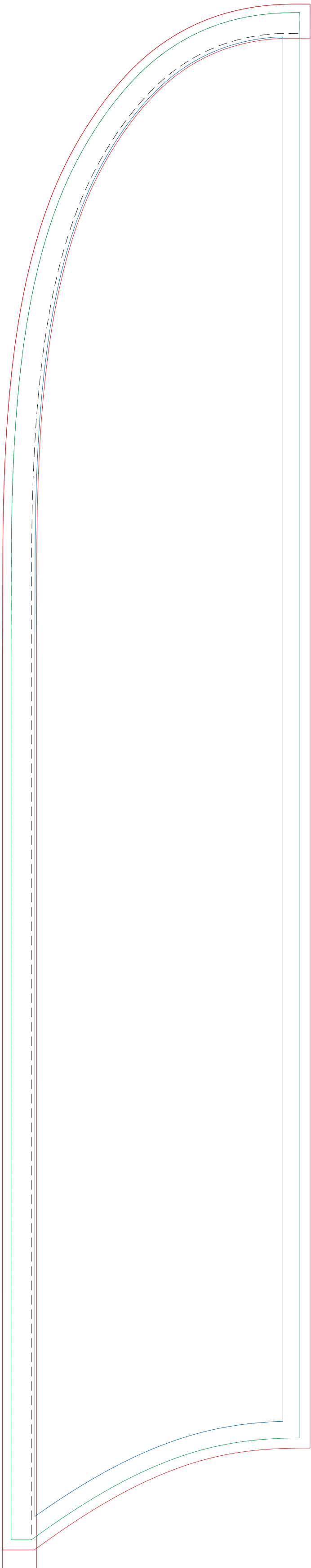
**Gestaltungsbereich:**  
Schriften und wichtige Gestaltungselement möglichst nur innerhalb dieses Bereiches platzieren.

**Bleed line:**  
In case of solid or full colour background please allow enough bleed.  
The background colour has to end at the red line.

**End format:**  
The green line shows the finished size.

**Artwork area:**  
In order to avoid seams going through logos or logos being chopped off, please place any design within the blue line.

-----  
**Hohlsaum / hemstitch**



**Bowflag® XLarge**  
konkav / concav  
85 x 450 cm



Maßstab / scale: 1:10

**Zugaben:**  
Ausreichend Zugaben bis zur roten Linie anlegen.

**Endformat:**  
Dies ist die endgültig sichtbare Größe.

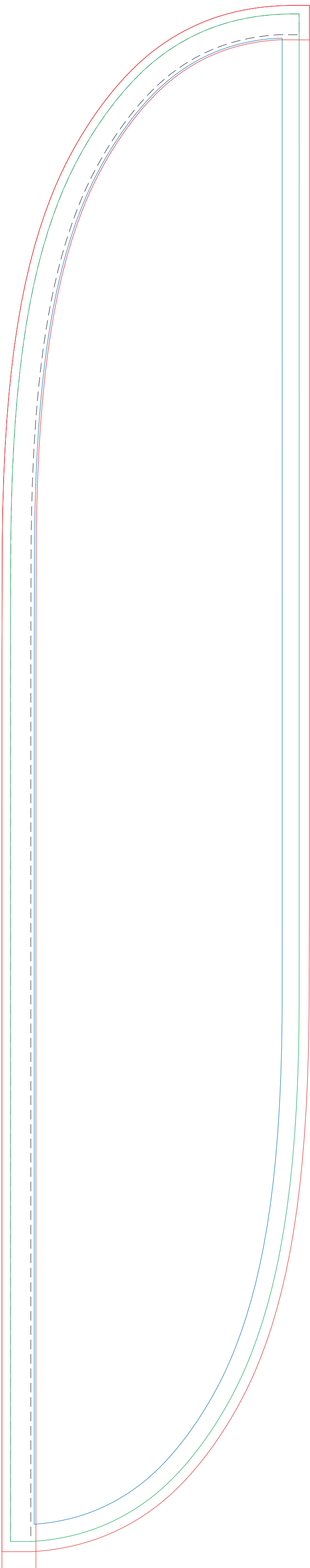
**Gestaltungsbereich:**  
Schriften und wichtige Gestaltungselemente möglichst nur innerhalb dieses Bereiches platzieren.

**Bleed line:**  
In case of solid or full colour background please allow enough bleed.  
The background colour has to end at the red line.

**End format:**  
The green line shows the finished size.

**Artwork area:**  
In order to avoid seams going through logos or logos being chopped off, please place any design within the blue line.

-----  
**Hohlsaum / hemstitch**



**Bowflag® XLarge**  
konvex / convex  
85 x 450 cm



Maßstab / scale: 1:10

**Zugaben:**  
Ausreichend Zugaben bis zur roten Linie anlegen.

**Endformat:**  
Dies ist die endgültig sichtbare Größe.

**Gestaltungsbereich:**  
Schriften und wichtige Gestaltungselement möglichst nur innerhalb dieses Bereiches platzieren.

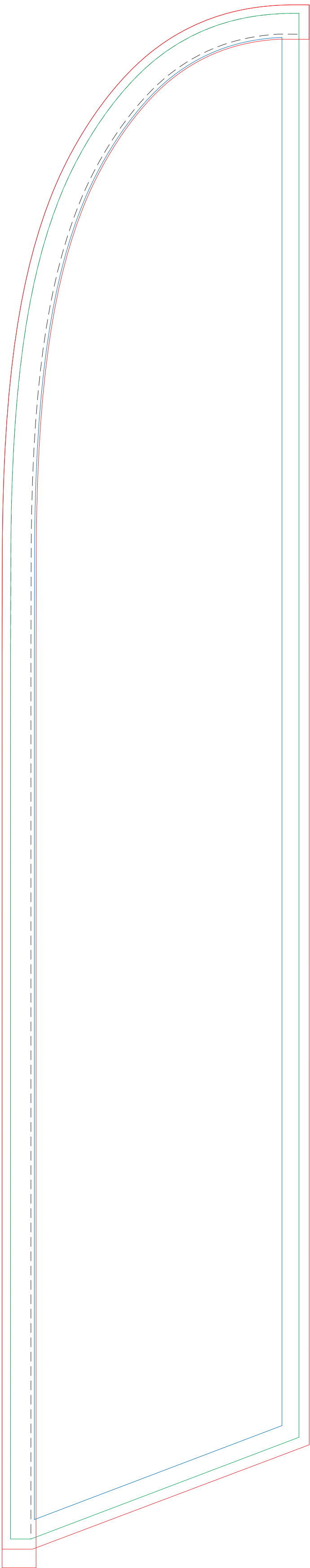
**Bleed line:**  
In case of solid or full colour background please allow enough bleed.  
The background colour has to end at the red line.

**End format:**  
The green line shows the finished size.

**Artwork area:**  
In order to avoid seams going through logos or logos being chopped off, please place any design within the blue line.

-----  
**Hohlsaum / hemstitch**





**Bowflag® XLarge**  
schräg / angled  
85 x 450 cm



Maßstab / scale: 1:10

**Zugaben:**  
Ausreichend Zugaben bis zur roten Linie anlegen.

**Endformat:**  
Dies ist die endgültig sichtbare Größe.

**Gestaltungsbereich:**  
Schriften und wichtige Gestaltungselement möglichst nur innerhalb dieses Bereiches platzieren.

**Bleed line:**  
In case of solid or full colour background please allow enough bleed.  
The background colour has to end at the red line.

**End format:**  
The green line shows the finished size.

**Artwork area:**  
In order to avoid seams going through logos or logos being chopped off, please place any design within the blue line.

-----  
**Hohlsaum / hemstitch**