

Pop Out Small

145 x 58 cm

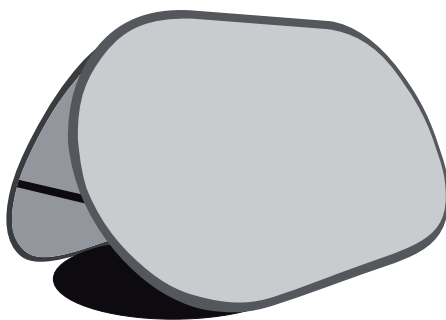
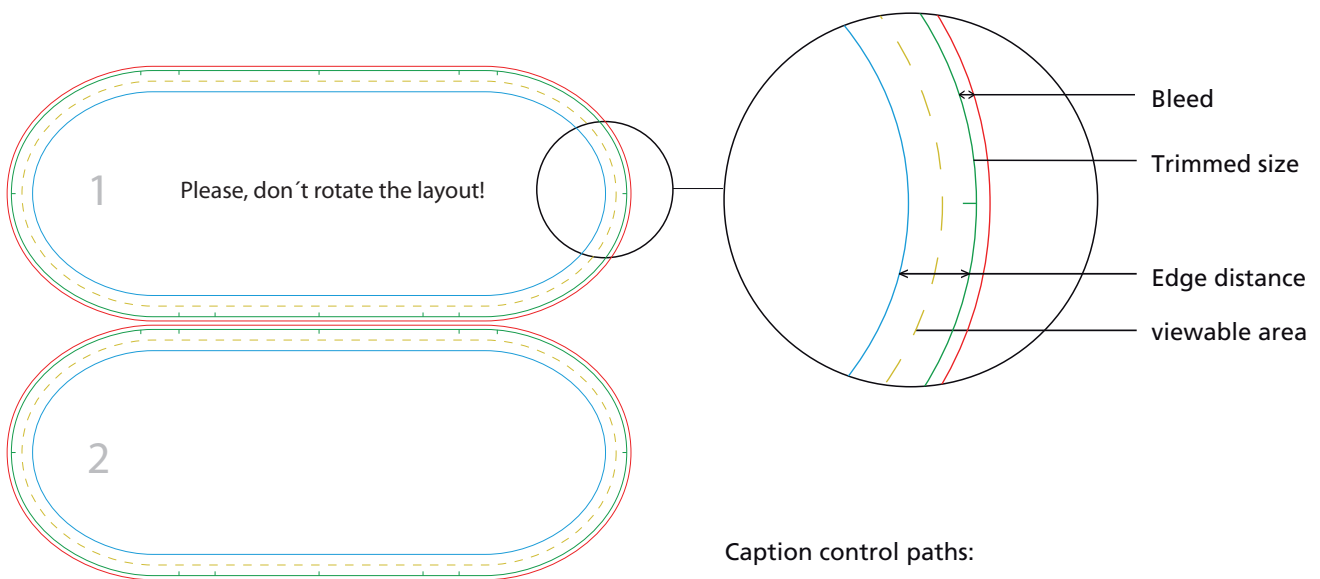
Trimmed size: 145 x 58 cm
viewable area: 140 x 53 cm

Data format: 147 x 121 mm

Please note:

- use 1:10 artwork on page 2 to design
- do not change the size of the document
- Resolution: min. 600 dpi at scale 1:10
- minimum stroke: 1 mm / 2 mm (invers)
- convert fonts into curves
- delete the control paths of the artwork

Further information can be found in our information on artwork.



Drawing is not true to scale.

Caption control paths:

Trimmed size:

The green line shows the finished size.

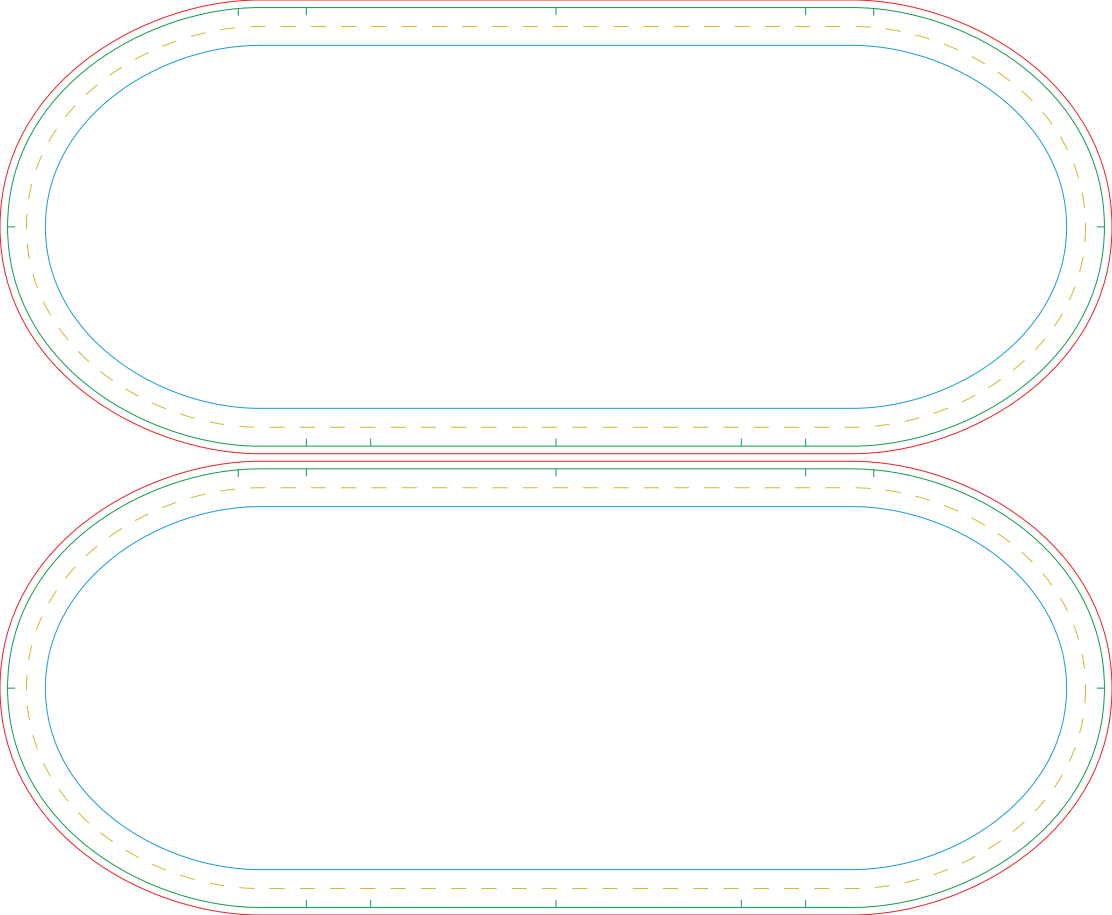
Bleed:

Please add definitely the bleed till the red line.

Edge distance:

Please consider edge distances! Place fonts and important artwork not over the blue line if possible.

viewable area



Pop Out Medium

215 x 98 cm

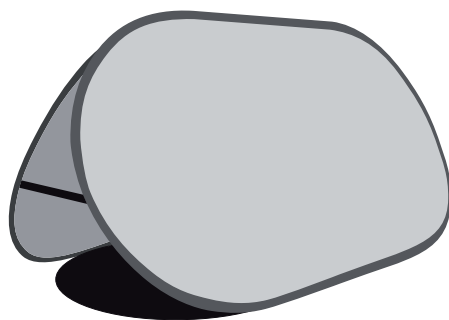
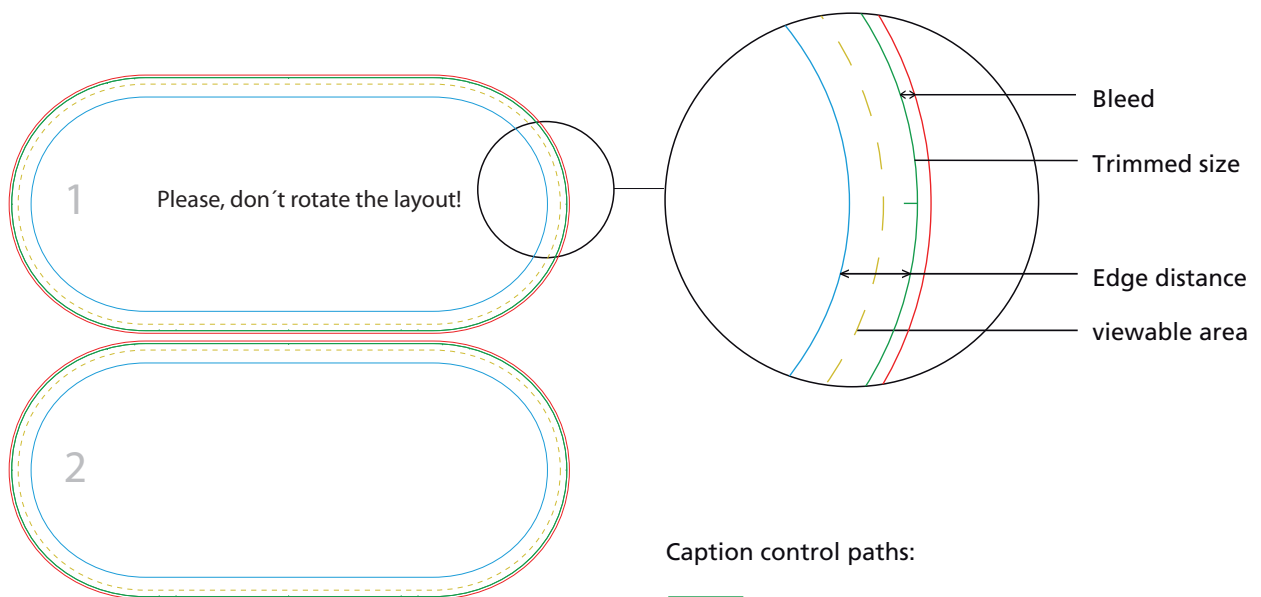
Trimmed size: 215 x 98 cm
viewable area: 210 x 93 cm

Data format: 217 x 203 mm

Please note:

- use 1:10 artwork on page 2 to design
- do not change the size of the document
- Resolution: min. 600 dpi at scale 1:10
- minimum stroke: 1 mm / 2 mm (invers)
- convert fonts into curves
- delete the control paths of the artwork

Further information can be found in our information on artwork.



Drawing is not true to scale.

Caption control paths:

Trimmed size:

The green line shows the finished size.

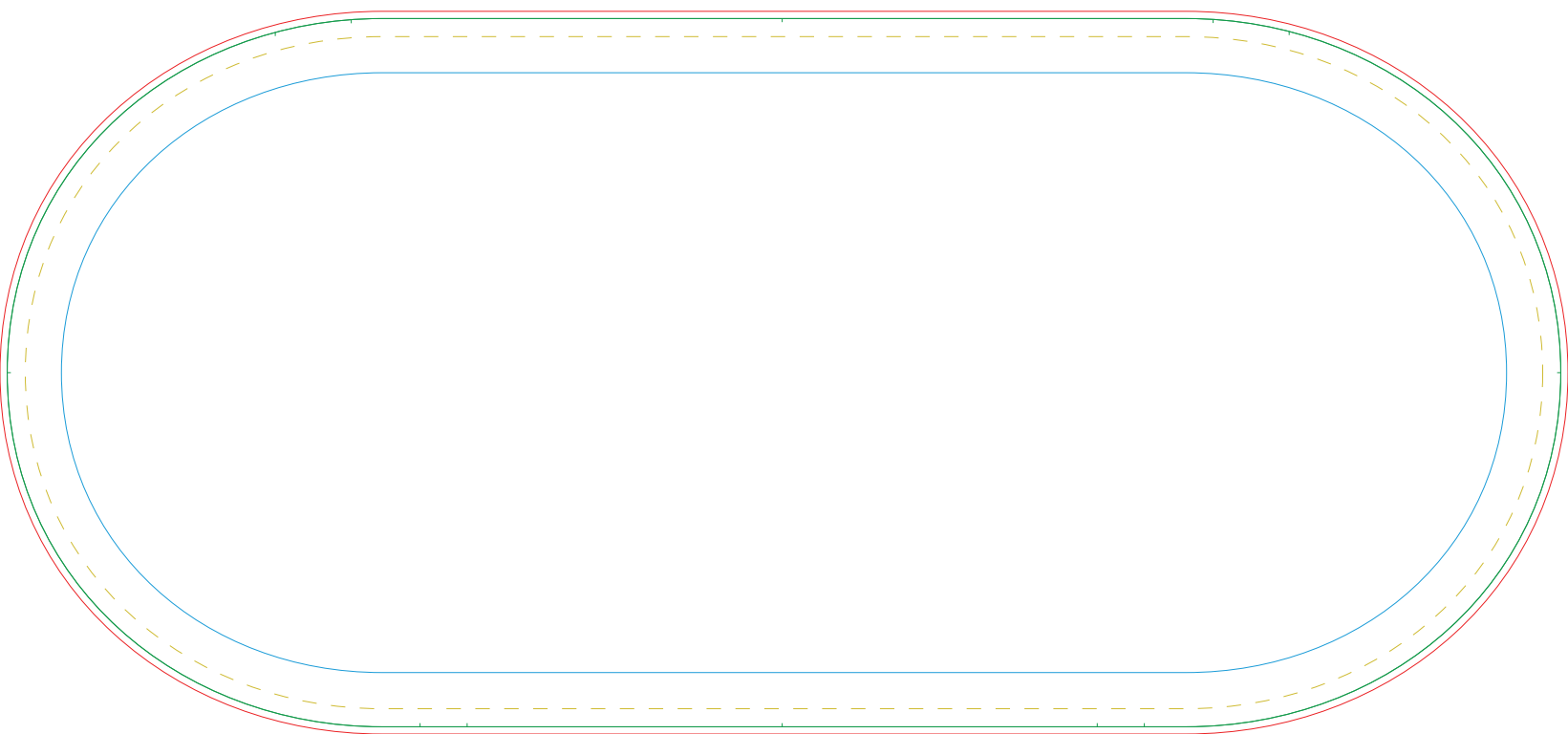
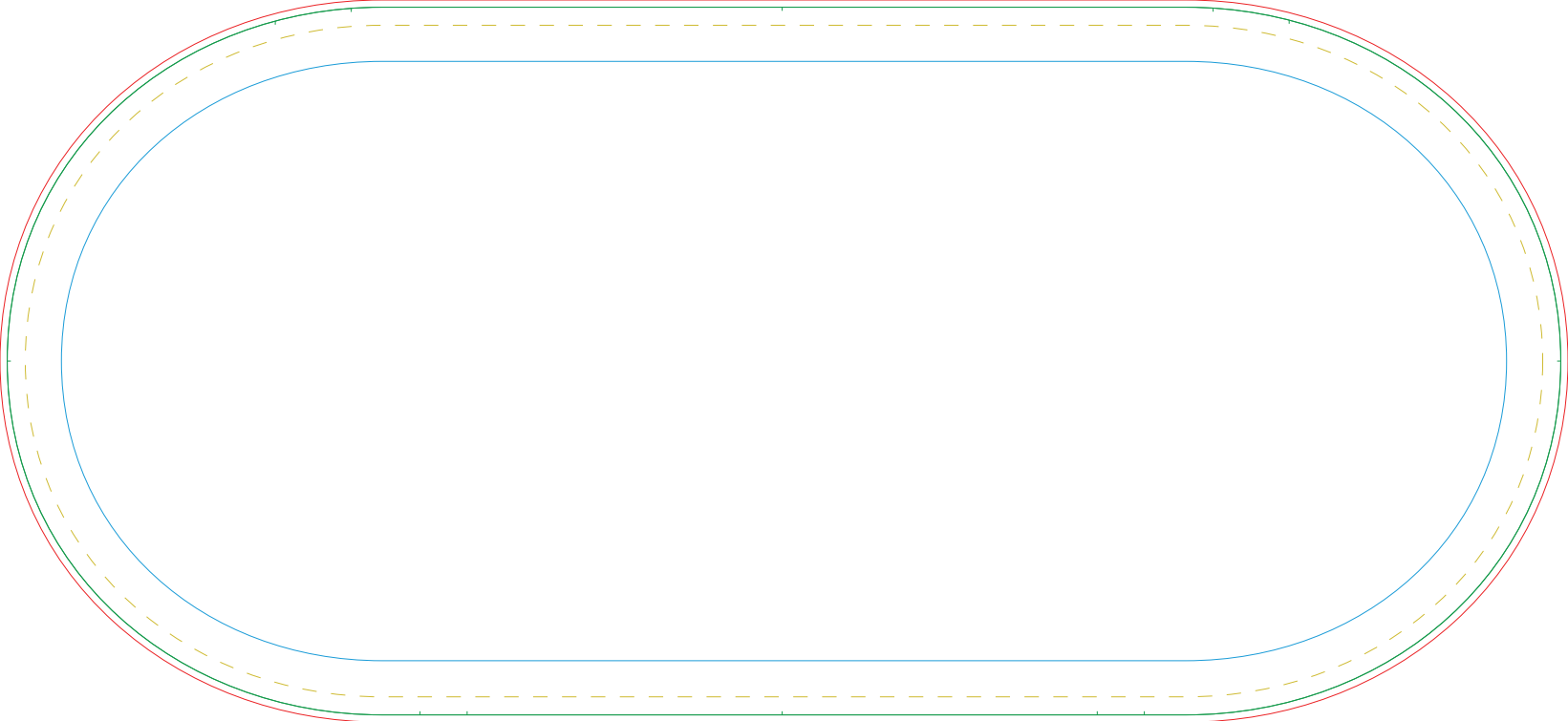
Bleed:

Please add definitely the bleed till the red line.

Edge distance:

Please consider edge distances! Place fonts and important artwork not over the blue line if possible.

viewable area



Pop Out Large

291 x 110 cm

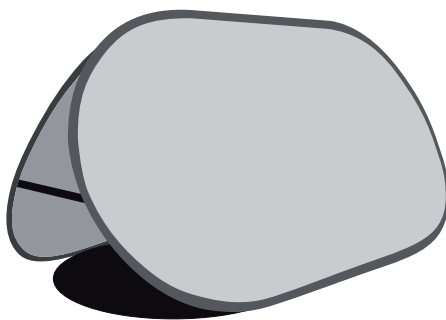
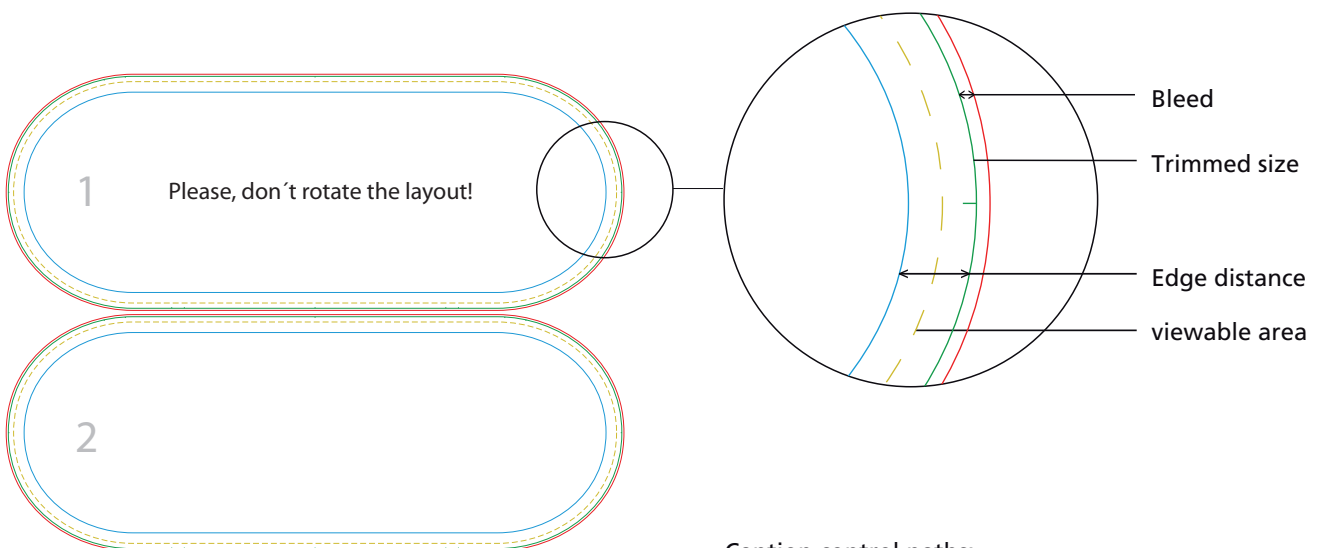
Trimmed size: 291 x 110 cm
viewable area: 286 x 105 cm

Data format: 293 x 226 mm

Please note:

- use 1:10 artwork on page 2 to design
- do not change the size of the document
- Resolution: min. 600 dpi at scale 1:10
- minimum stroke: 1 mm / 2 mm (invers)
- convert fonts into curves
- delete the control paths of the artwork

Further information can be found in our information on artwork.



Drawing is not true to scale.

Caption control paths:

Trimmed size:

The green line shows the finished size.

Bleed:

Please add definitely the bleed till the red line.

Edge distance:

Please consider edge distances! Place fonts and important artwork not over the blue line if possible.

viewable area

